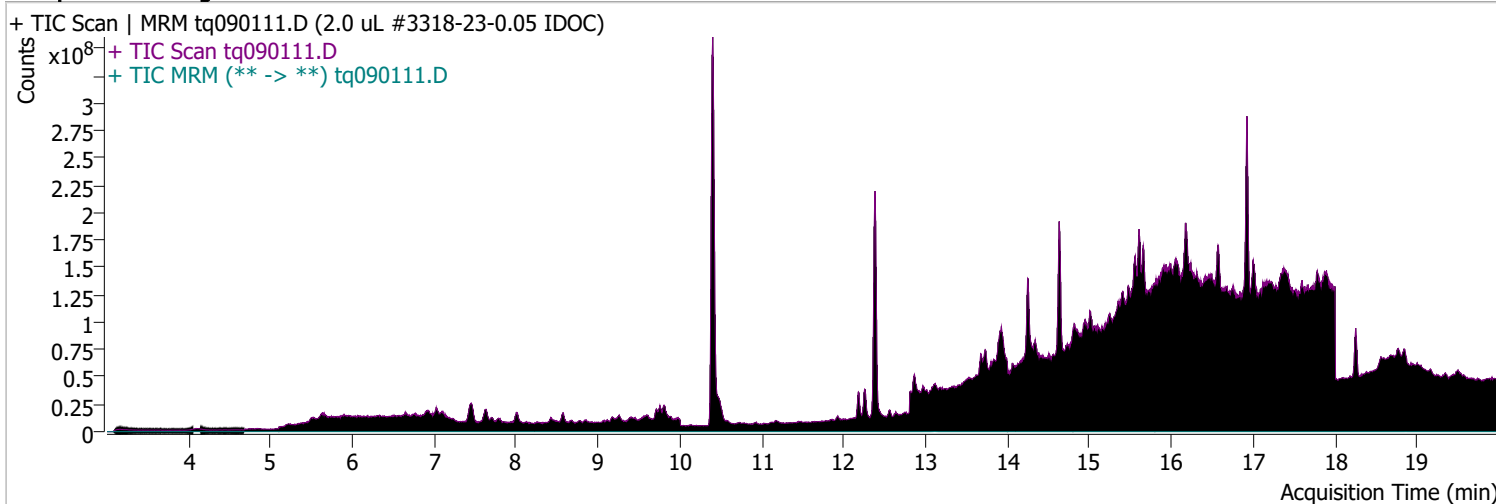


Quantitative Analysis Sample Report

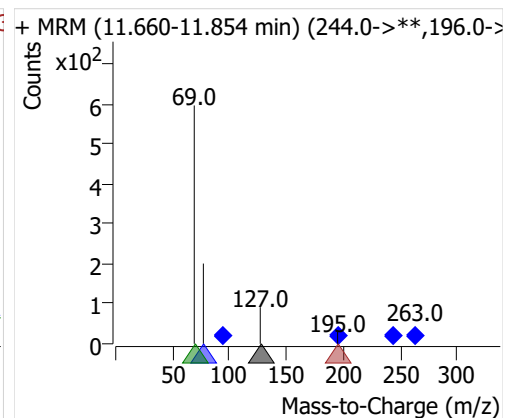
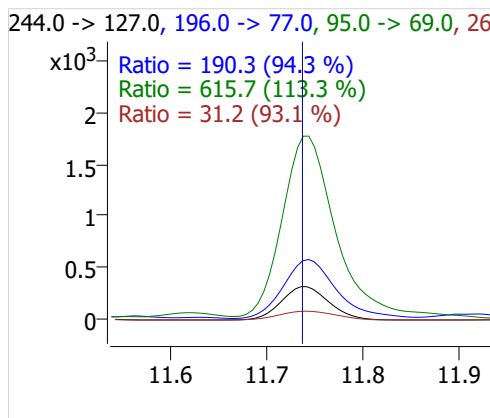
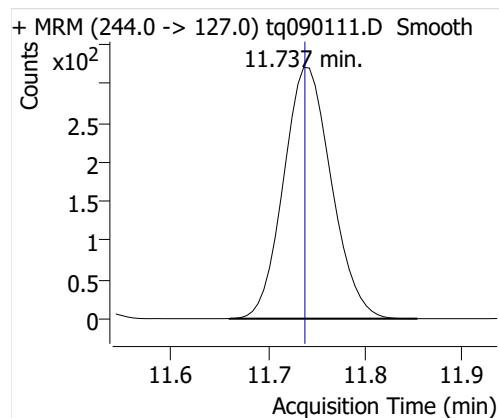
Batch Path	D:\MassHunter\GCMS\1\data\01sep22\QuantResults\01sep22.batch.bin		
Analysis Time	9/14/2022 9:28 AM	Analyst Name	DESKTOP-R0LAL7E\analyst
Report Time	10/20/2022 1:07:34 PM	Reporter Name	ES-AREA1\US32_USR_INS22923
Last Calib Update	9/6/2022 9:10 AM	Batch State	Processed
Quant Batch Version	10.1	Quant Report Version	10.1
Acq. Time	9/1/2022 6:58 PM	Data File	tq090111.D
Sample Type	QC	Sample Name	2.0 uL #3318-23-0.05 IDOC
Dilution	1	Acq. Method	tq22m0831

Sample Chromatogram

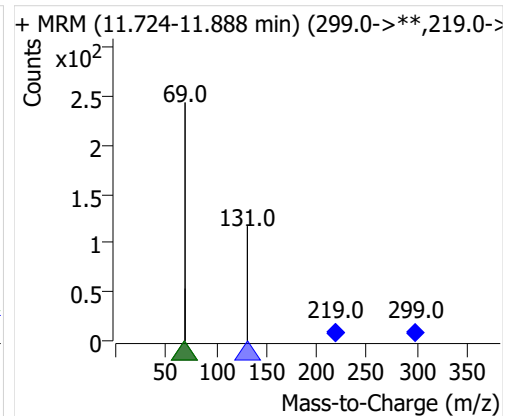
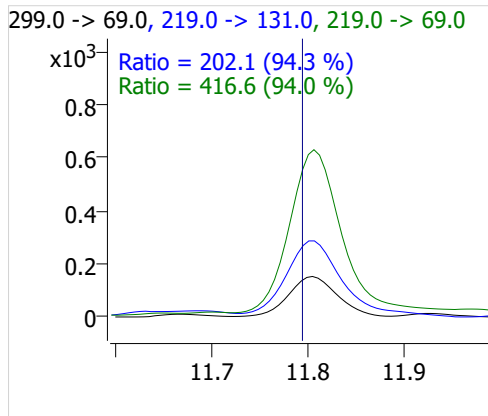
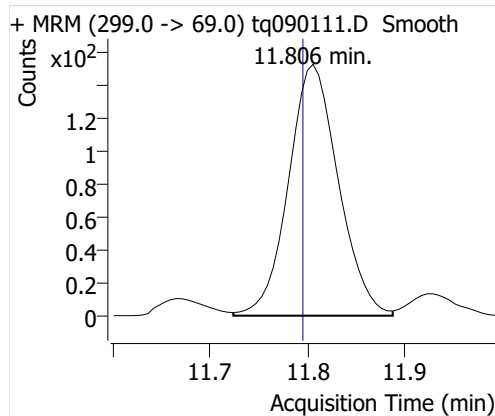


Compound	ISTD	RT	Resp.	ISTD Resp.	Resp. Ratio	Final Conc	Units
4:2 FTOH	6:2 FTOH-C13	11.737	1099	26831	0.0410	0.0985	ng
5:2sFTOH	6:2 FTOH-C13	11.806	545	26831	0.0203	0.1151	ng
7:2sFTOH	6:2 FTOH-C13	13.111	1124	26831	0.0419	0.1109	ng
6:2 FTOH	6:2 FTOH-C13	13.145	2406	26831	0.0897	0.1163	ng
8:2 FTOH-C13	6:2 FTOH-C13	14.342	8952	26831	0.3336	1.0797	ng
8:2 FTOH	6:2 FTOH-C13	14.343	520	26831	0.0194	0.0863	ng
10:2 FTOH	6:2 FTOH-C13	15.416	237	26831	0.0088	0.1175	ng
12:2 FTOH	6:2 FTOH-C13	16.396	878	26831	0.0327	0.1148	ng
NMeFOSA	6:2 FTOH-C13	18.600	562	26831	0.0210	0.1168	ng
NEtFOSA	6:2 FTOH-C13	18.869	2388	26831	0.0890	0.1108	ng

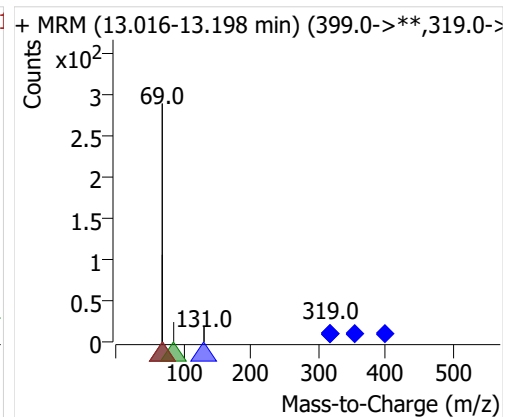
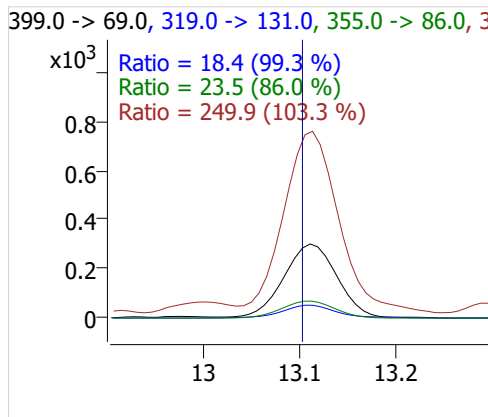
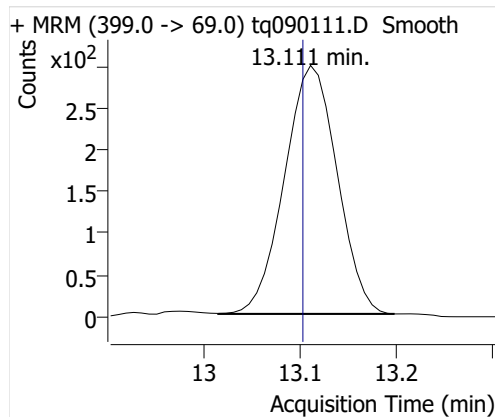
4:2 FTOH



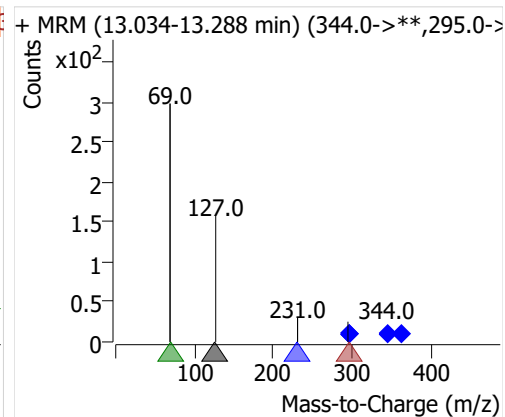
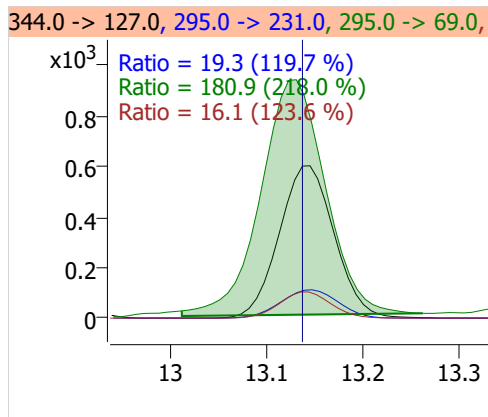
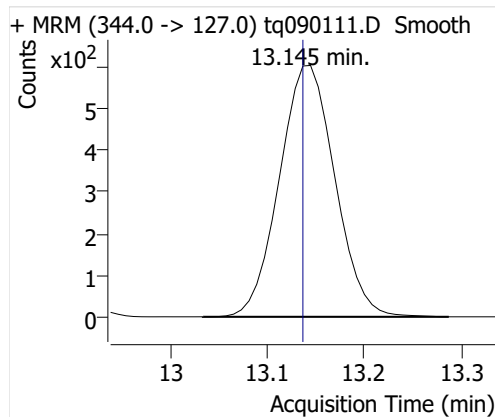
5:2sFTOH



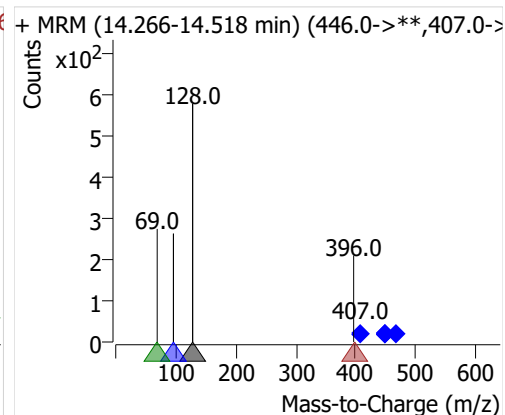
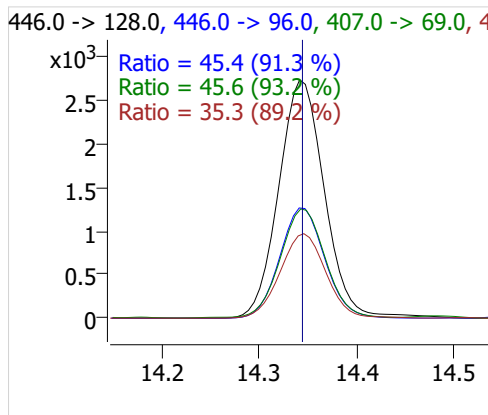
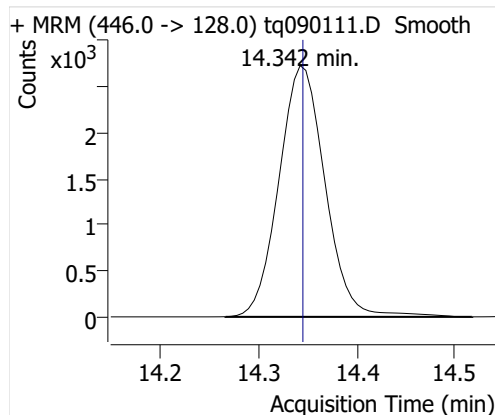
7:2sFTOH



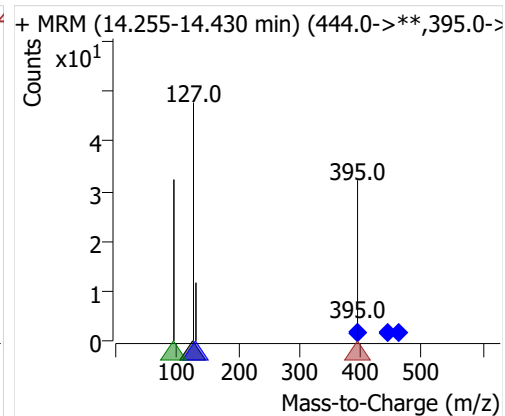
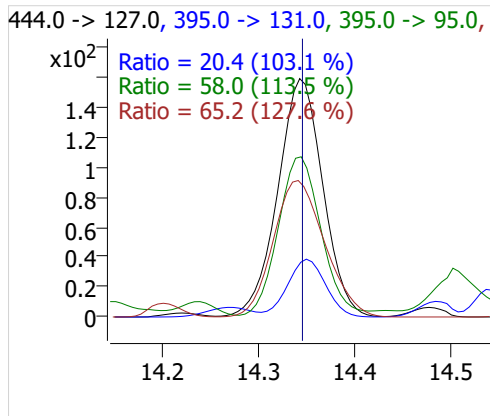
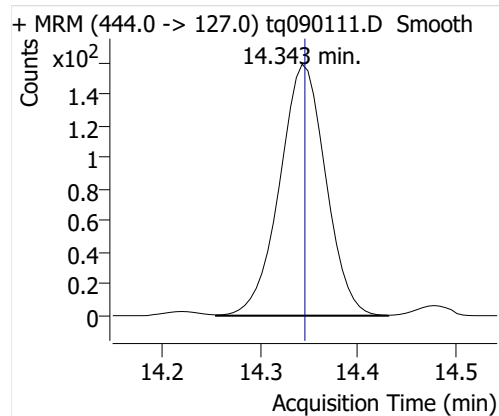
6:2 FTOH



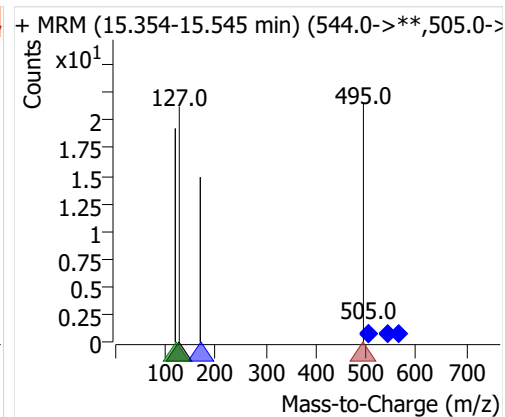
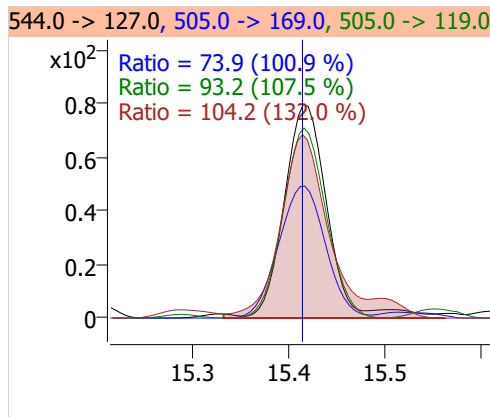
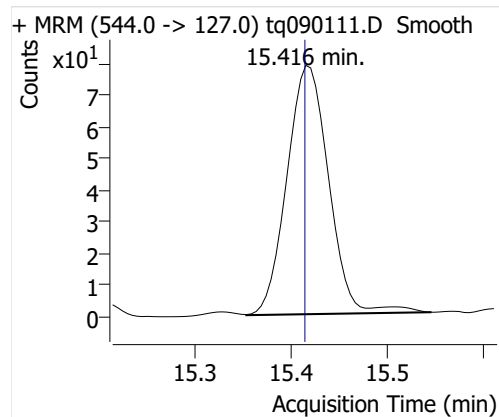
8:2 FTOH-C13



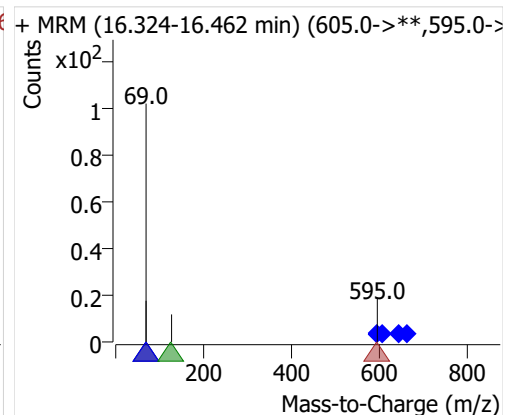
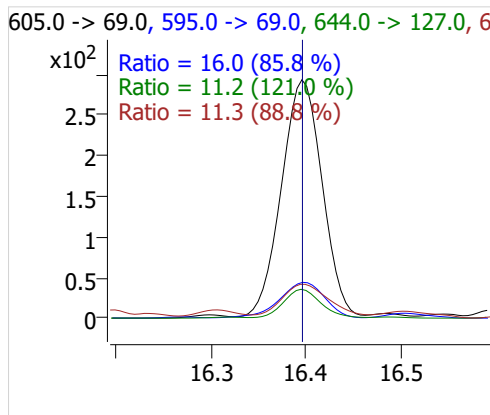
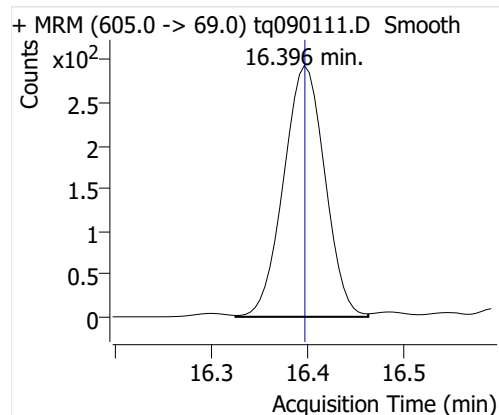
8:2 FTOH



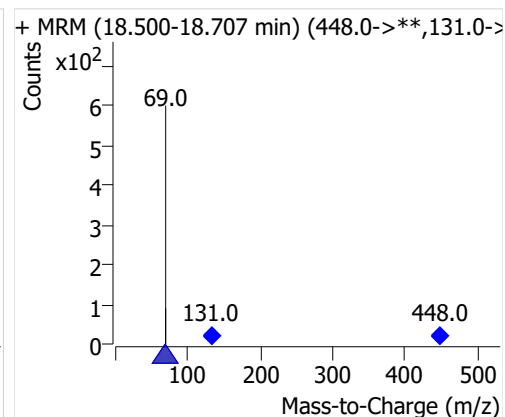
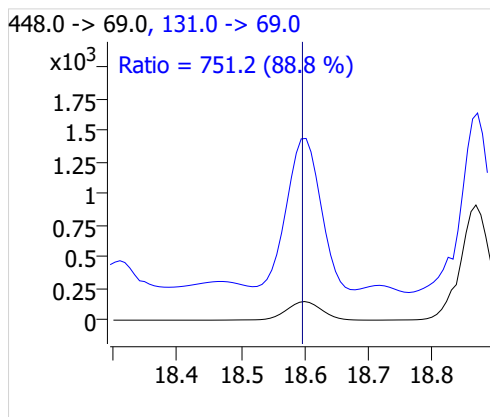
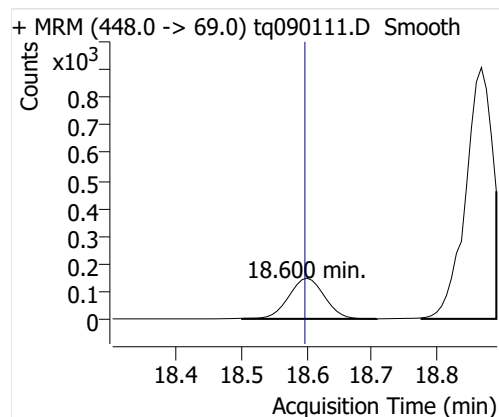
10:2 FTOH



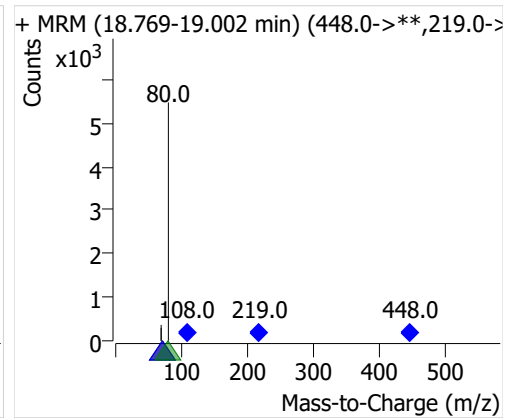
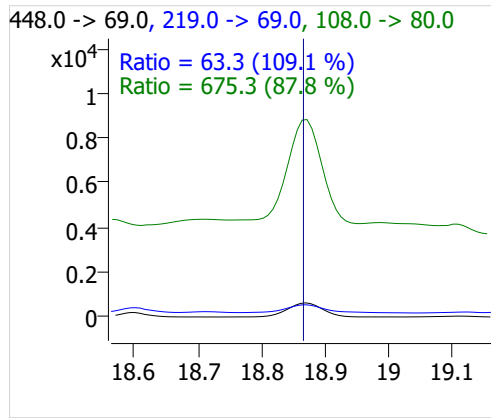
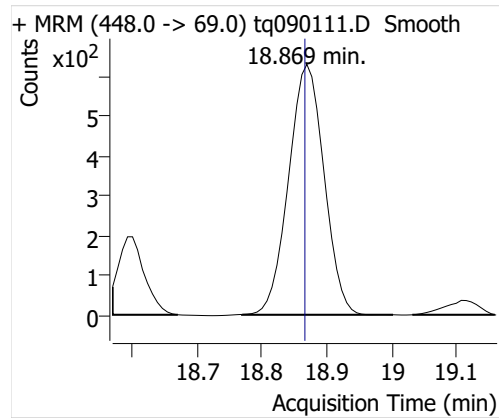
12:2 FTOH



NMeFOSA



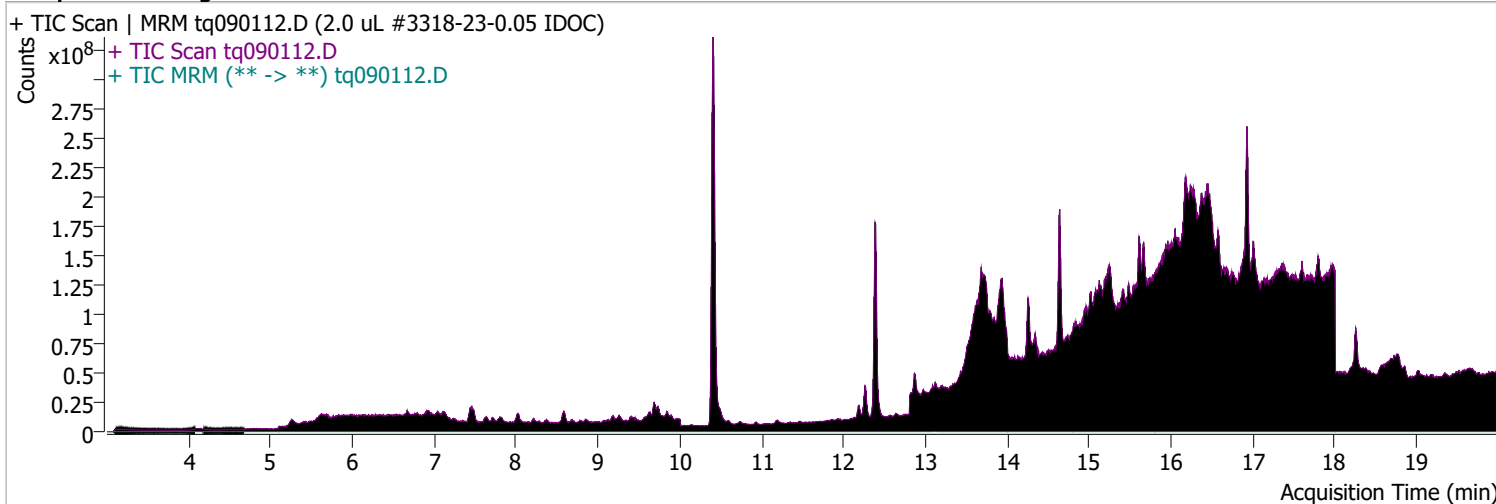
NETFOSA



Quantitative Analysis Sample Report

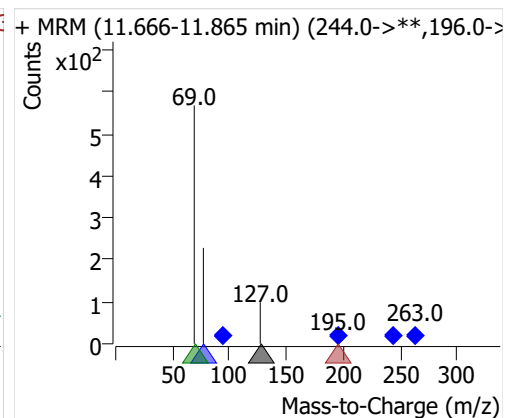
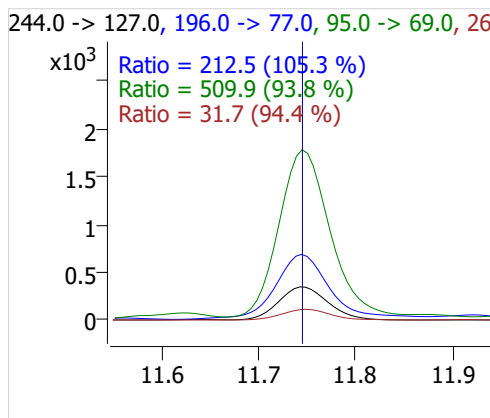
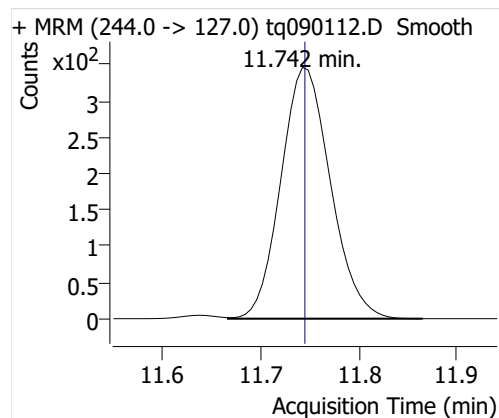
Batch Path D:\MassHunter\GCMS\1\data\01sep22\QuantResults\01sep22.batch.bin
Analysis Time 9/14/2022 9:28 AM **Analyst Name** DESKTOP-R0LAL7E\analyst
Report Time 10/20/2022 1:07:39 PM **Reporter Name** ES-AREA1\US32_USR_INS22923
Last Calib Update 9/6/2022 9:10 AM **Batch State** Processed
Quant Batch Version 10.1 **Quant Report Version** 10.1
Acq. Time 9/1/2022 7:39 PM **Data File** tq090112.D
Sample Type QC **Sample Name** 2.0 uL #3318-23-0.05 IDOC
Dilution 1 **Acq. Method** tq22m0831

Sample Chromatogram

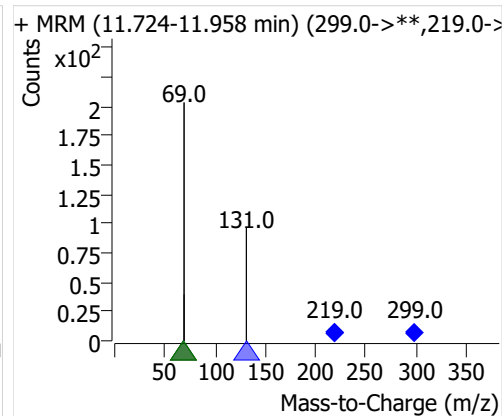
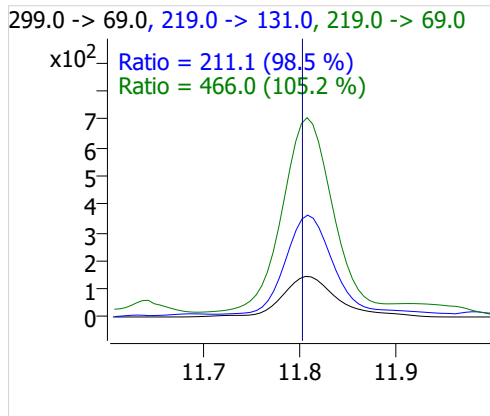
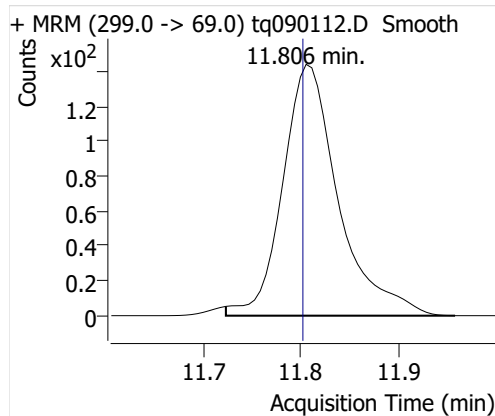


Compound	ISTD	RT	Resp.	ISTD Resp.	Resp. Ratio	Final Conc	Units
4:2 FTOH	6:2 FTOH-C13	11.742	1220	28941	0.0422	0.1014	ng
5:2sFTOH	6:2 FTOH-C13	11.806	569	28941	0.0197	0.1115	ng
7:2sFTOH	6:2 FTOH-C13	13.111	1224	28941	0.0423	0.1120	ng
6:2 FTOH	6:2 FTOH-C13	13.137	2610	28941	0.0902	0.1170	ng
8:2 FTOH-C13	6:2 FTOH-C13	14.348	8386	28941	0.2898	0.9377	ng
8:2 FTOH	6:2 FTOH-C13	14.348	631	28941	0.0218	0.0969	ng
10:2 FTOH	6:2 FTOH-C13	15.421	179	28941	0.0062	0.0824	ng
12:2 FTOH	6:2 FTOH-C13	16.401	782	28941	0.0270	0.0948	ng
NMeFOSA	6:2 FTOH-C13	18.601	505	28941	0.0174	0.0972	ng
NEtFOSA	6:2 FTOH-C13	18.870	2240	28941	0.0774	0.0964	ng

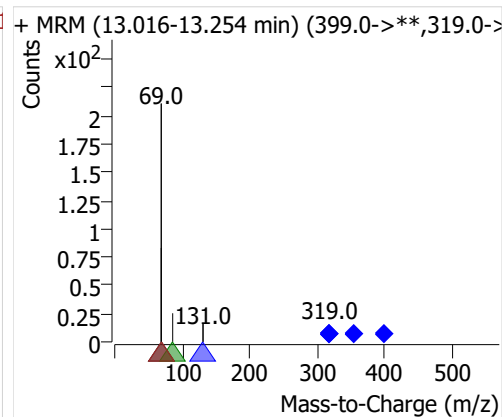
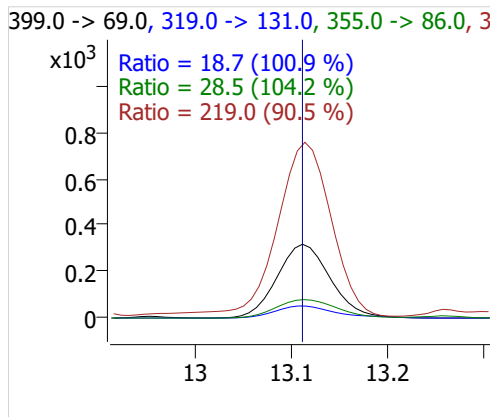
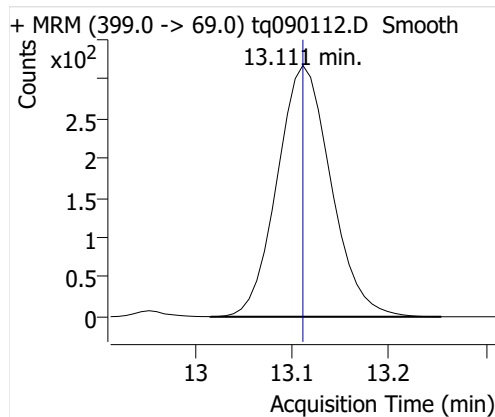
4:2 FTOH



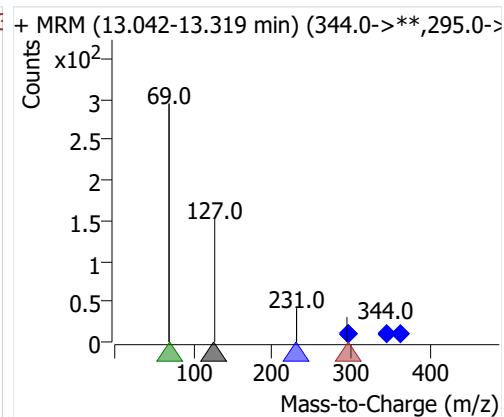
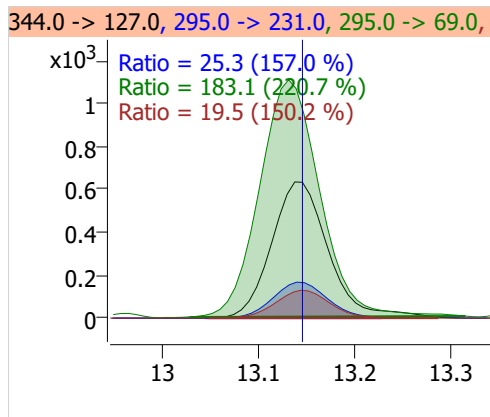
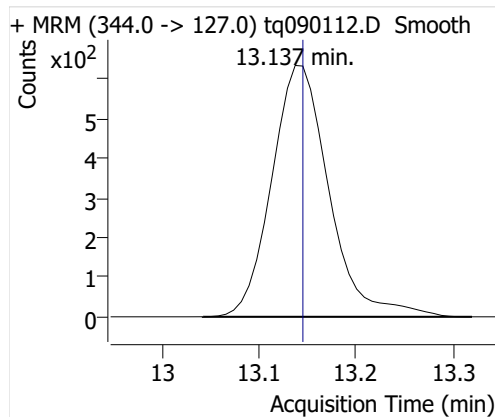
5:2sFTOH



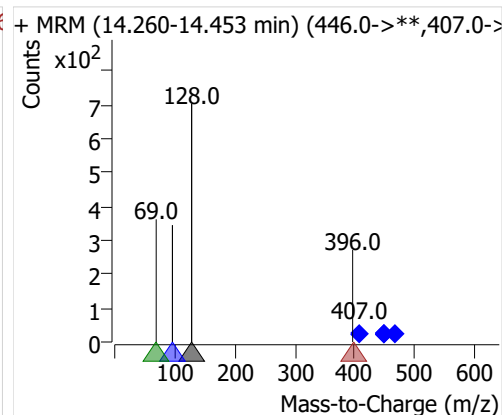
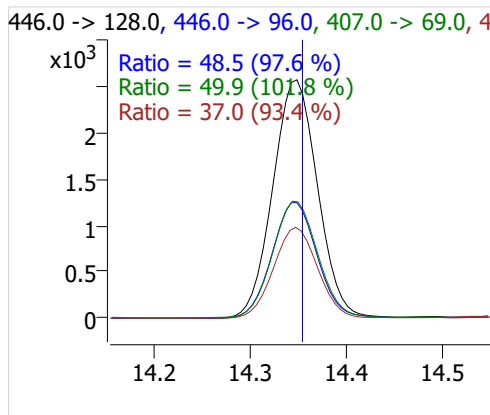
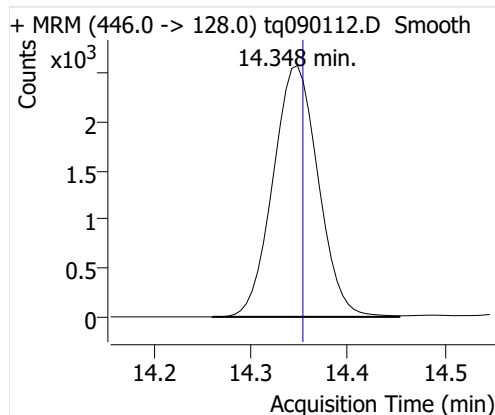
7:2sFTOH



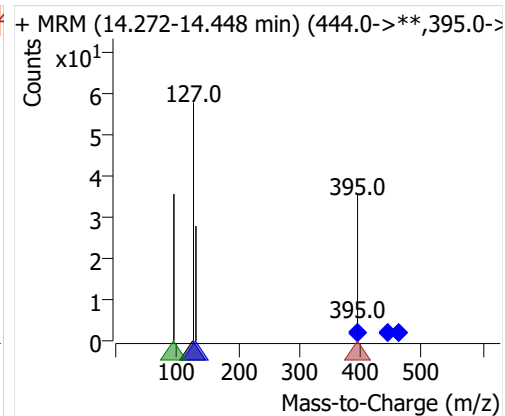
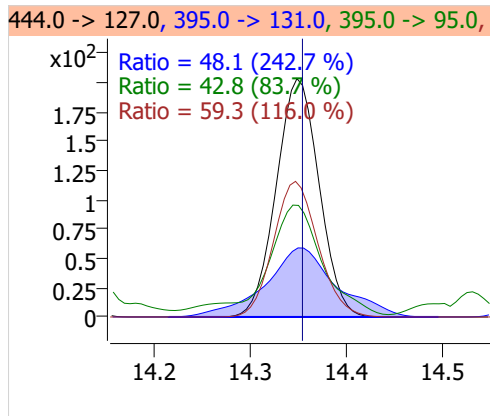
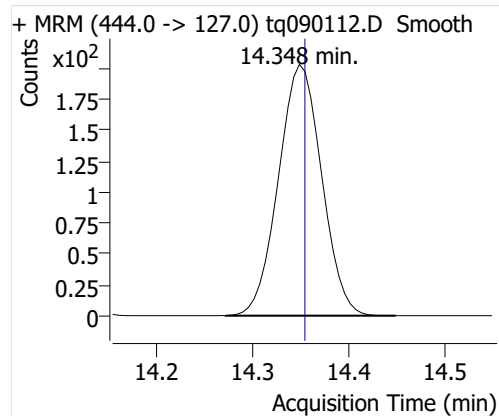
6:2 FTOH



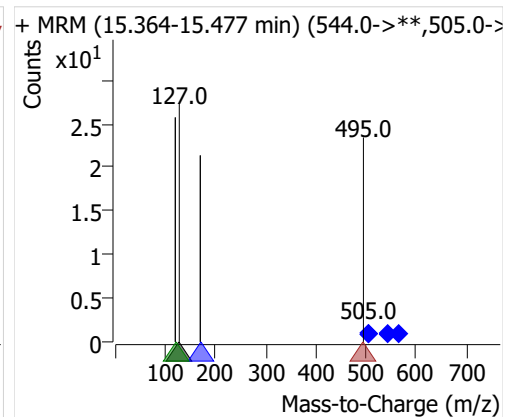
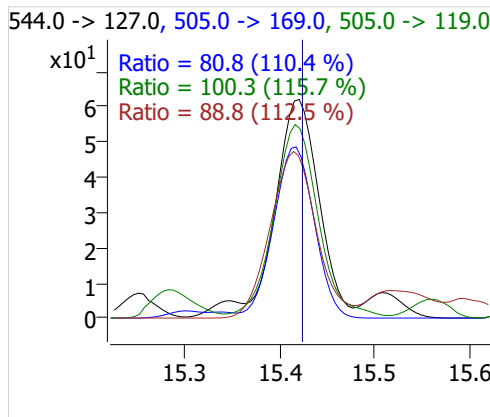
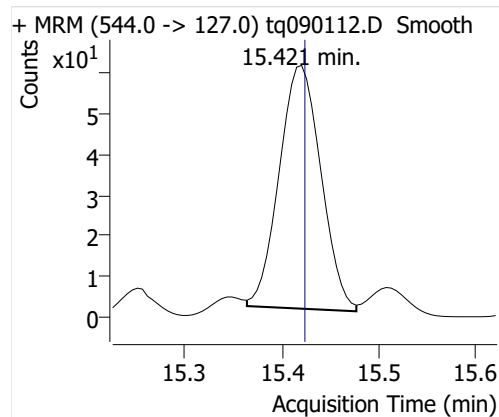
8:2 FTOH-C13



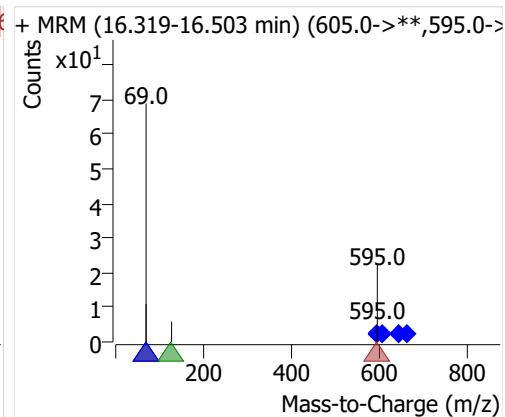
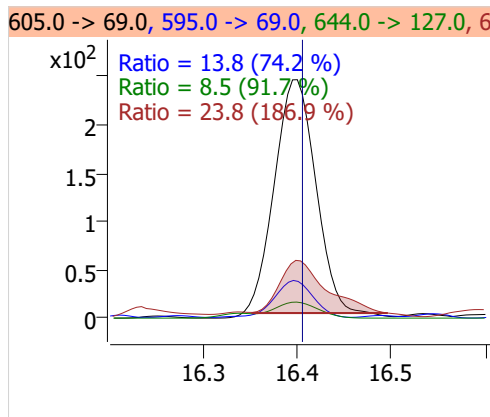
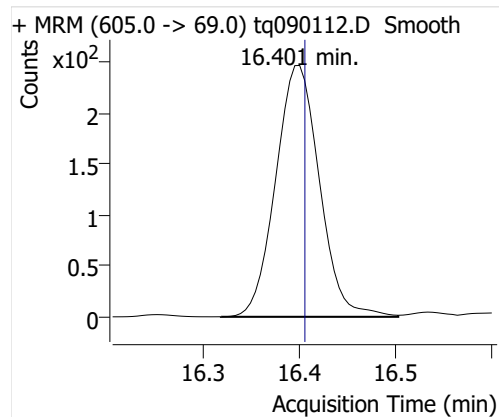
8:2 FTOH



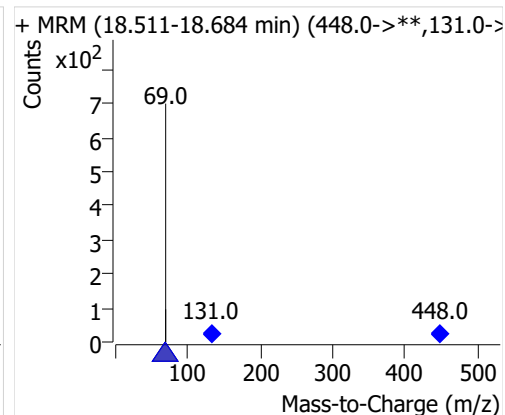
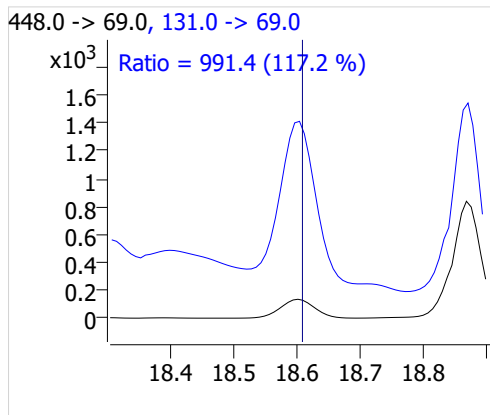
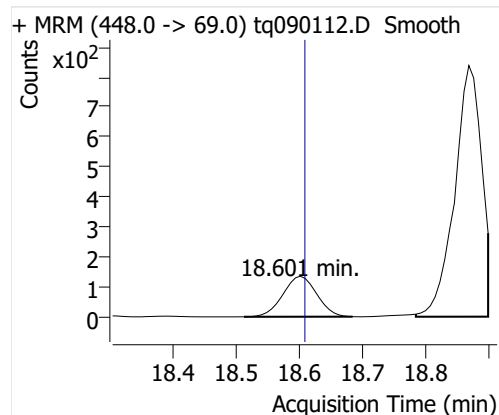
10:2 FTOH



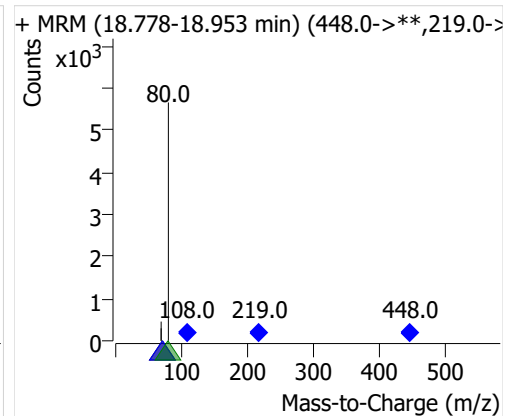
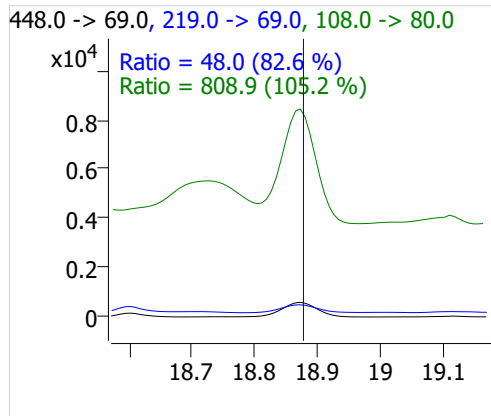
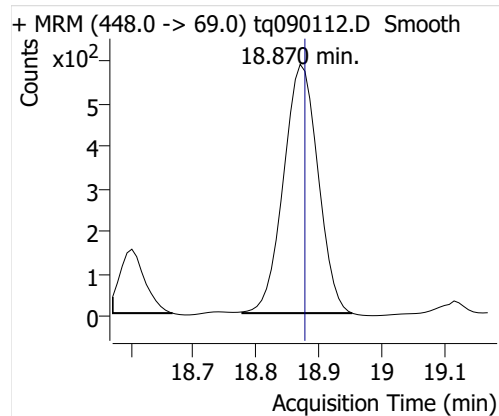
12:2 FTOH



NMeFOSA



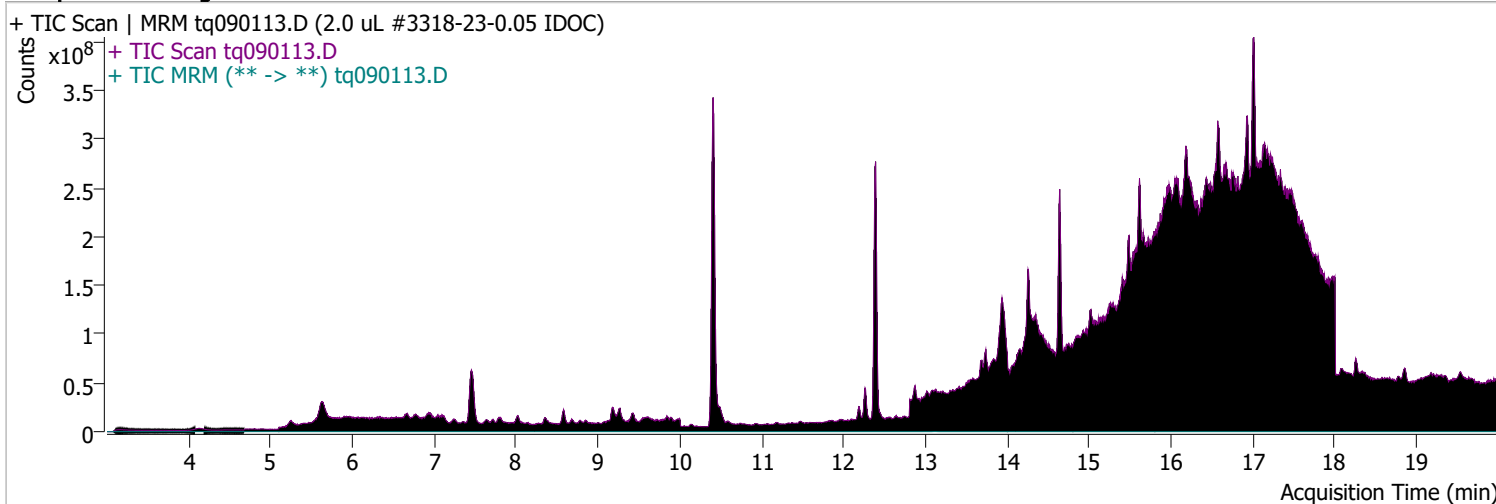
NETFOSA



Quantitative Analysis Sample Report

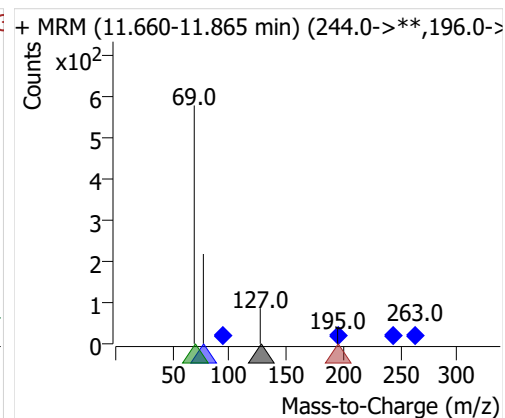
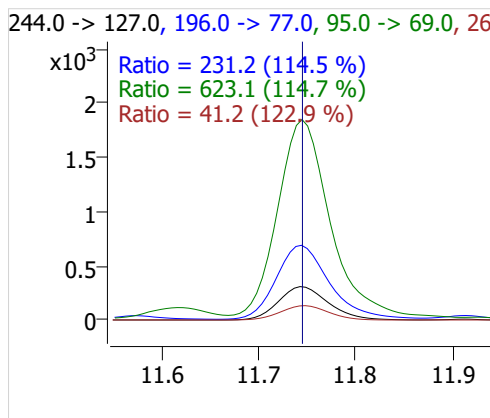
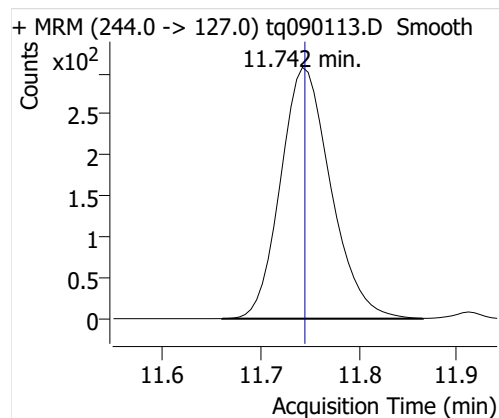
Batch Path	D:\MassHunter\GCMS\1\data\01sep22\QuantResults\01sep22.batch.bin		
Analysis Time	9/14/2022 9:28 AM	Analyst Name	DESKTOP-R0LAL7E\analyst
Report Time	10/20/2022 1:07:40 PM	Reporter Name	ES-AREA1\US32_USR_INS22923
Last Calib Update	9/6/2022 9:10 AM	Batch State	Processed
Quant Batch Version	10.1	Quant Report Version	10.1
Acq. Time	9/1/2022 8:20 PM	Data File	tq090113.D
Sample Type	QC	Sample Name	2.0 uL #3318-23-0.05 IDOC
Dilution	1	Acq. Method	tq22m0831

Sample Chromatogram

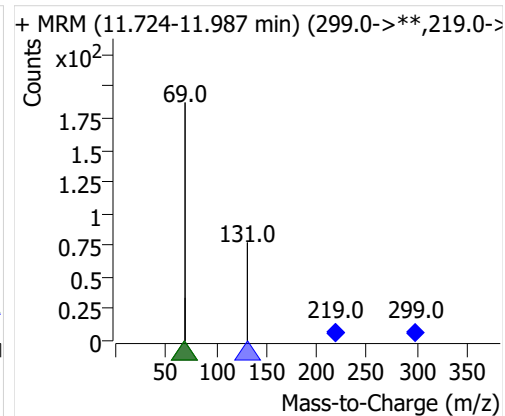
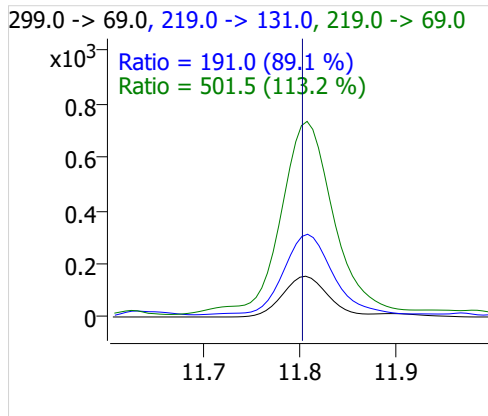
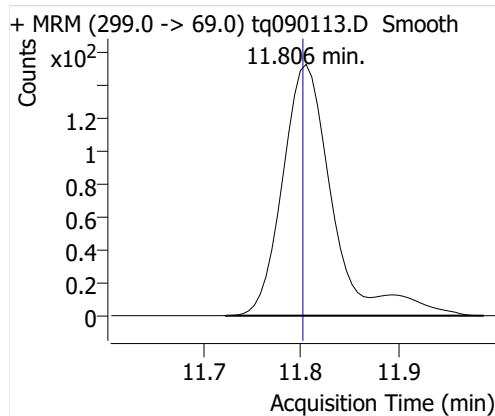


Compound	ISTD	RT	Resp.	ISTD Resp.	Resp. Ratio	Final Conc	Units
4:2 FTOH	6:2 FTOH-C13	11.742	1100	27740	0.0396	0.0953	ng
5:2sFTOH	6:2 FTOH-C13	11.806	545	27740	0.0197	0.1115	ng
7:2sFTOH	6:2 FTOH-C13	13.111	1094	27740	0.0394	0.1044	ng
6:2 FTOH	6:2 FTOH-C13	13.145	2771	27740	0.0999	0.1295	ng
8:2 FTOH-C13	6:2 FTOH-C13	14.348	8970	27740	0.3234	1.0465	ng
8:2 FTOH	6:2 FTOH-C13	14.348	824	27740	0.0297	0.1322	ng
10:2 FTOH	6:2 FTOH-C13	15.416	200	27740	0.0072	0.0958	ng
12:2 FTOH	6:2 FTOH-C13	16.397	825	27740	0.0298	0.1044	ng
NMeFOSA	6:2 FTOH-C13	18.601	384	27740	0.0138	0.0771	ng
NEtFOSA	6:2 FTOH-C13	18.870	1779	27740	0.0641	0.0799	ng

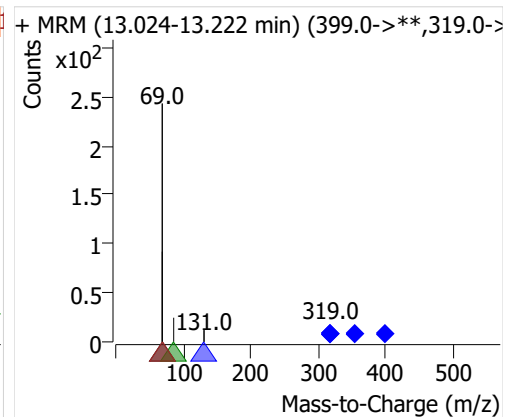
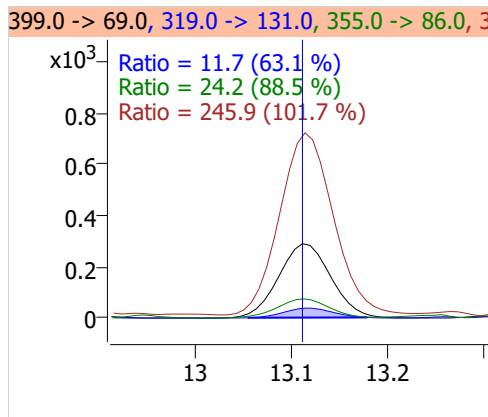
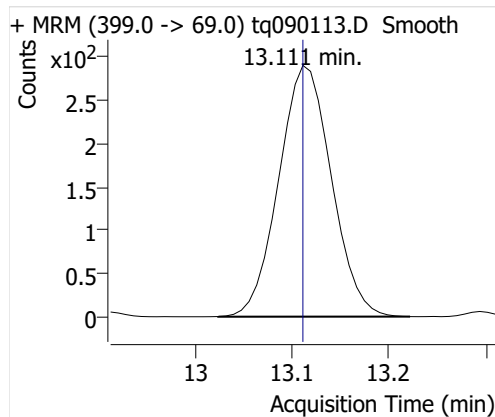
4:2 FTOH



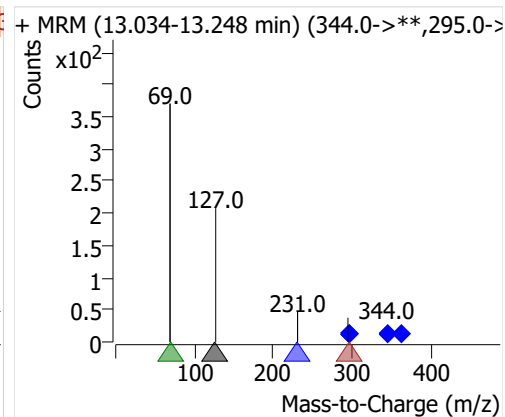
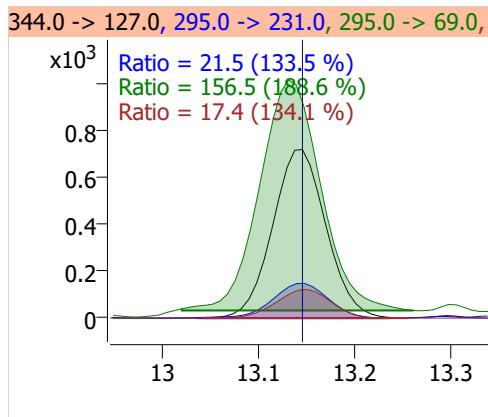
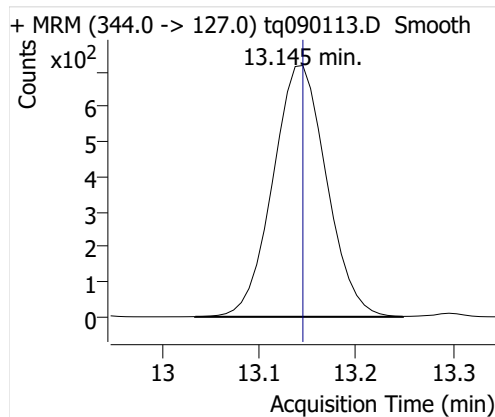
5:2sFTOH



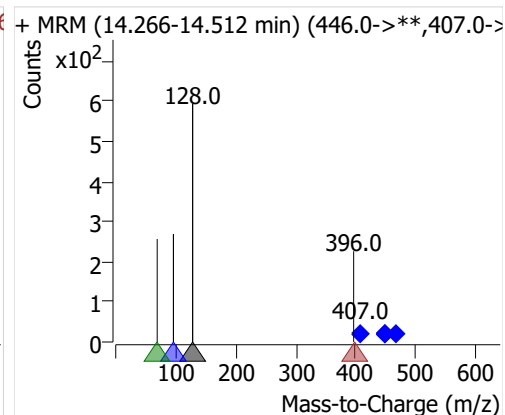
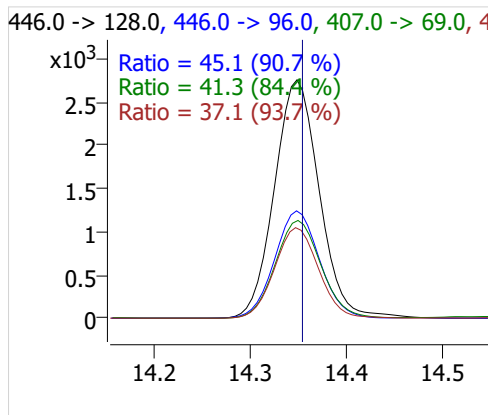
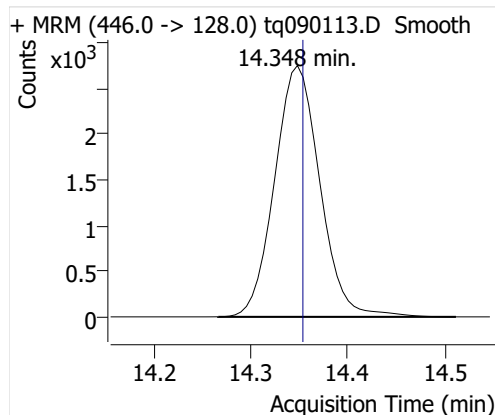
7:2sFTOH



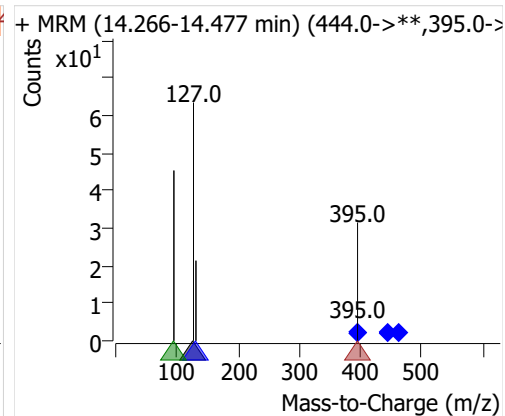
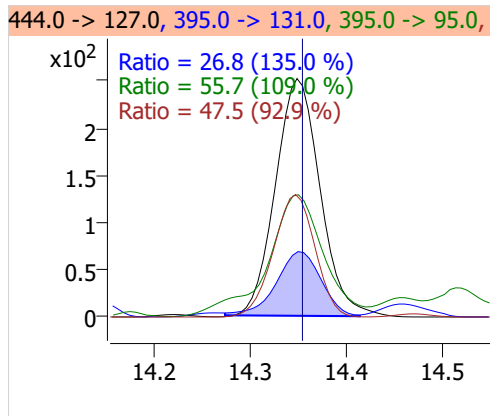
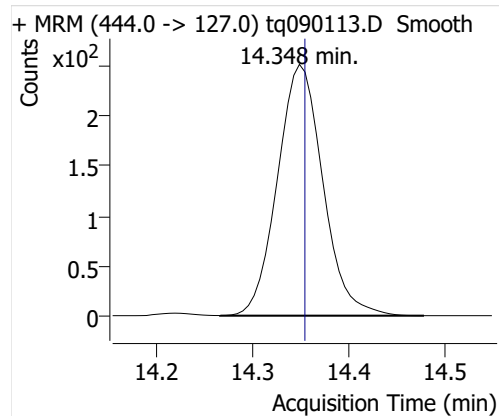
6:2 FTOH



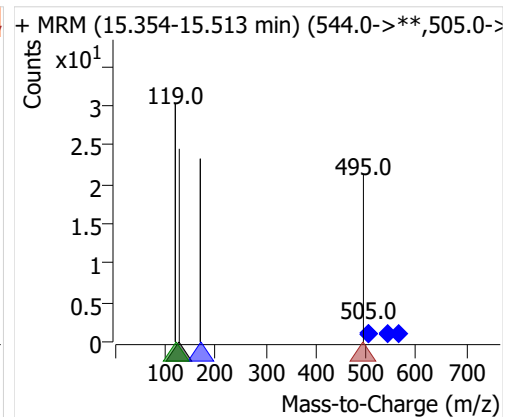
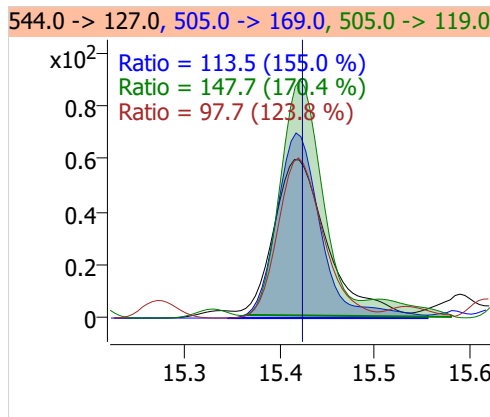
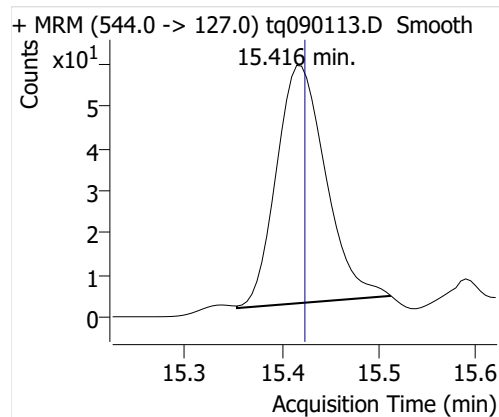
8:2 FTOH-C13



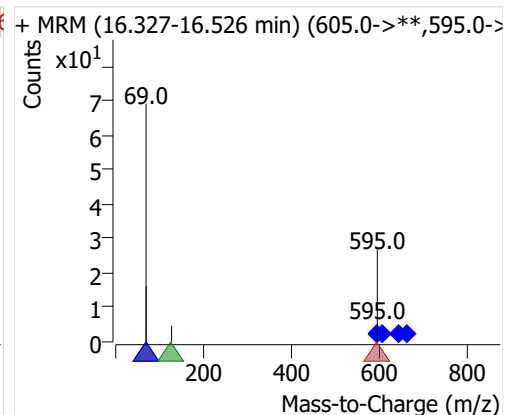
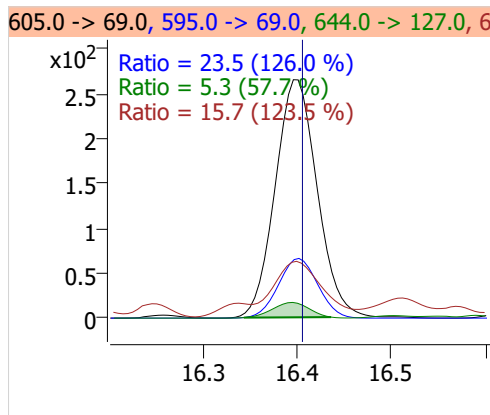
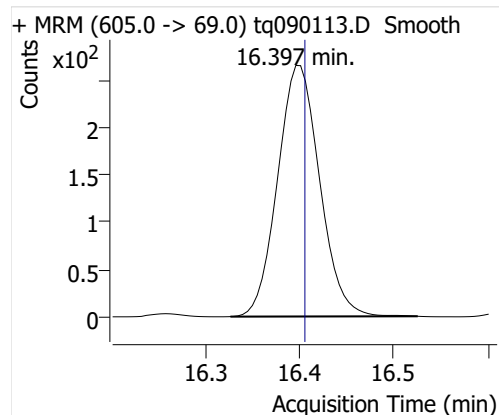
8:2 FTOH



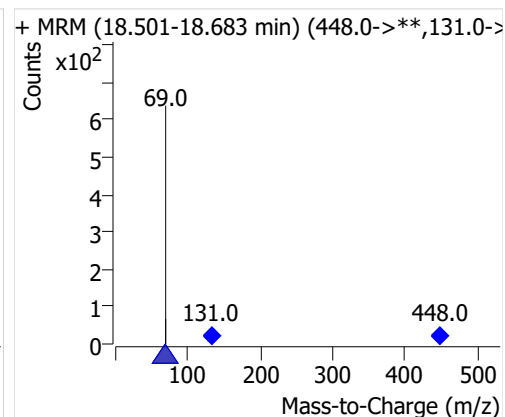
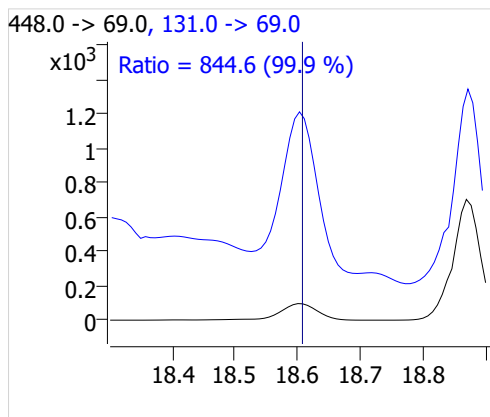
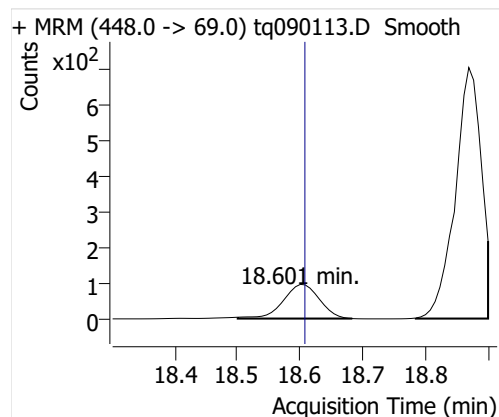
10:2 FTOH



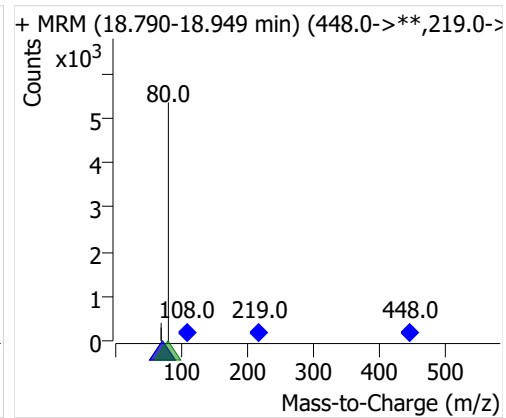
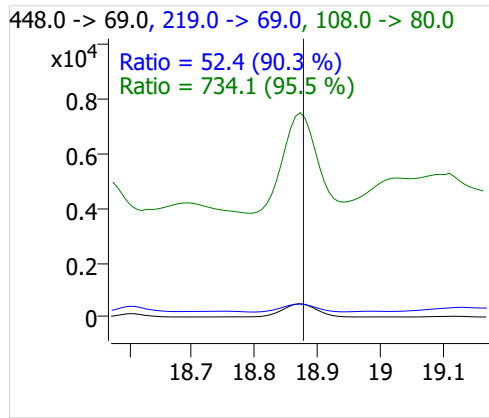
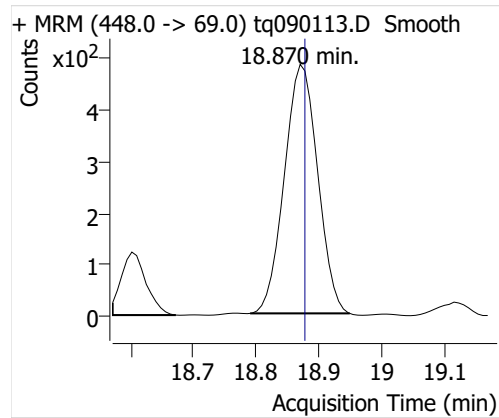
12:2 FTOH



NMeFOSA



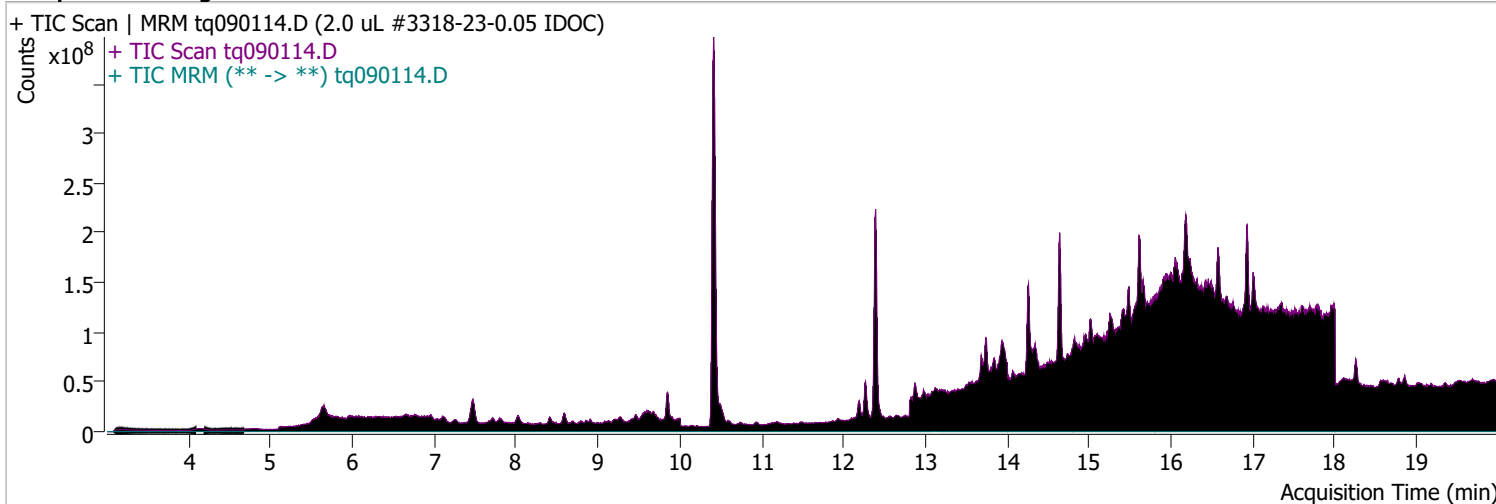
NETFOSA



Quantitative Analysis Sample Report

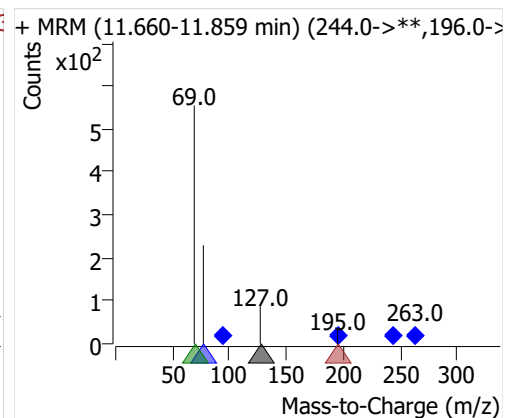
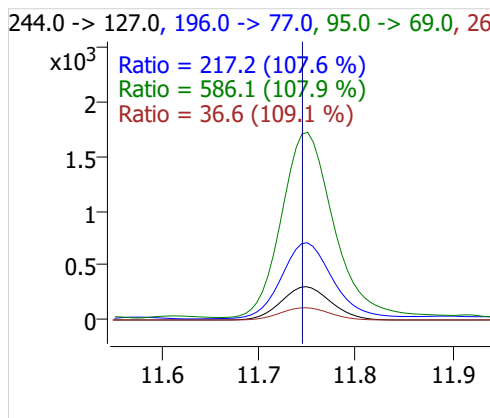
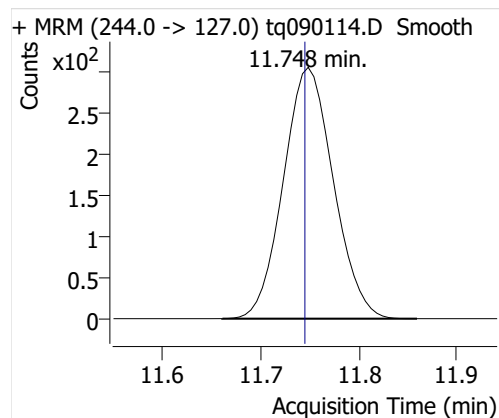
Batch Path D:\MassHunter\GCMS\1\data\01sep22\QuantResults\01sep22.batch.bin
Analysis Time 9/14/2022 9:28 AM **Analyst Name** DESKTOP-R0LAL7E\analyst
Report Time 10/20/2022 1:07:41 PM **Reporter Name** ES-AREA1\US32_USR_INS22923
Last Calib Update 9/6/2022 9:10 AM **Batch State** Processed
Quant Batch Version 10.1 **Quant Report Version** 10.1
Acq. Time 9/1/2022 9:00 PM **Data File** tq090114.D
Sample Type QC **Sample Name** 2.0 uL #3318-23-0.05 IDOC
Dilution 1 **Acq. Method** tq22m0831

Sample Chromatogram

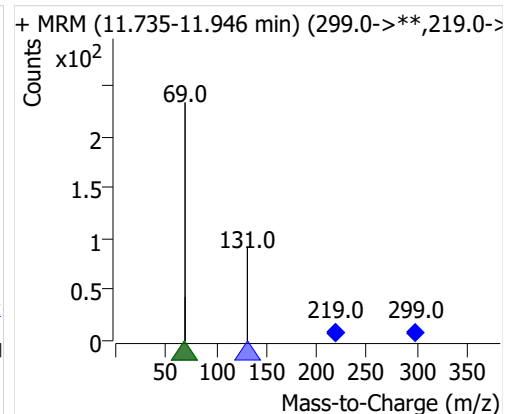
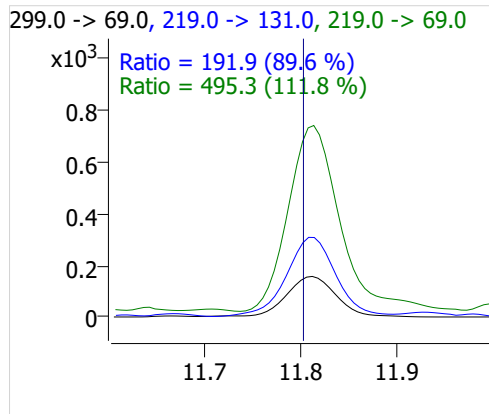
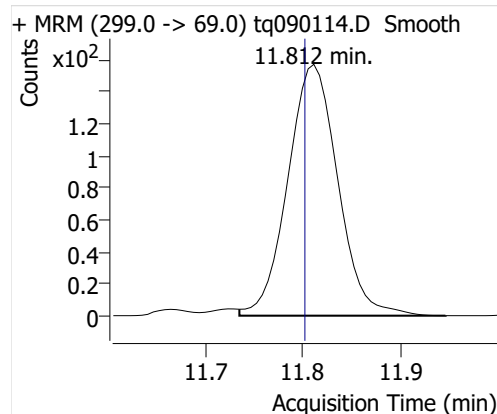


Compound	ISTD	RT	Resp.	ISTD Resp.	Resp. Ratio	Final Conc	Units
4:2 FTOH	6:2 FTOH-C13	11.748	1088	28334	0.0384	0.0923	ng
5:2sFTOH	6:2 FTOH-C13	11.812	558	28334	0.0197	0.1117	ng
7:2sFTOH	6:2 FTOH-C13	13.111	1199	28334	0.0423	0.1120	ng
6:2 FTOH	6:2 FTOH-C13	13.145	3157	28334	0.1114	0.1445	ng
8:2 FTOH-C13	6:2 FTOH-C13	14.348	8960	28334	0.3162	1.0234	ng
8:2 FTOH	6:2 FTOH-C13	14.348	778	28334	0.0275	0.1222	ng
10:2 FTOH	6:2 FTOH-C13	15.421	253	28334	0.0089	0.1186	ng
12:2 FTOH	6:2 FTOH-C13	16.401	1030	28334	0.0363	0.1275	ng
NMeFOSA	6:2 FTOH-C13	18.601	622	28334	0.0220	0.1224	ng
NEtFOSA	6:2 FTOH-C13	18.870	2893	28334	0.1021	0.1272	ng

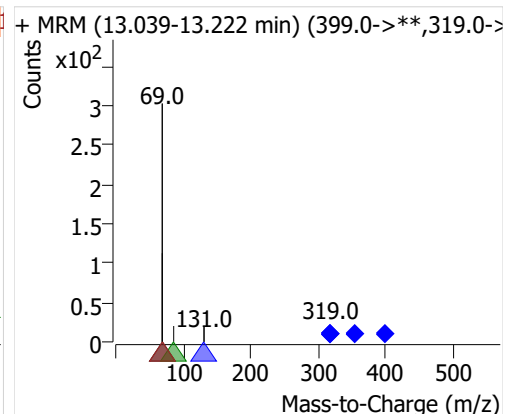
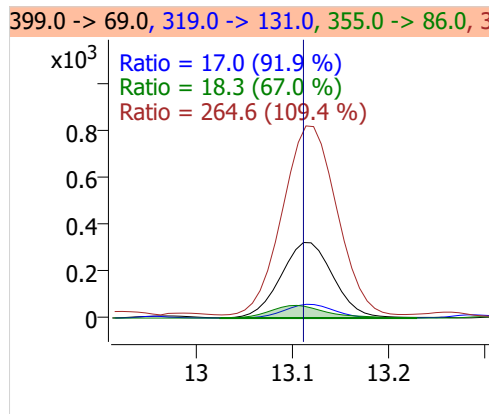
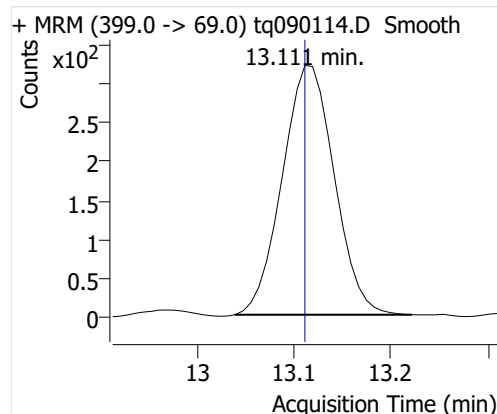
4:2 FTOH



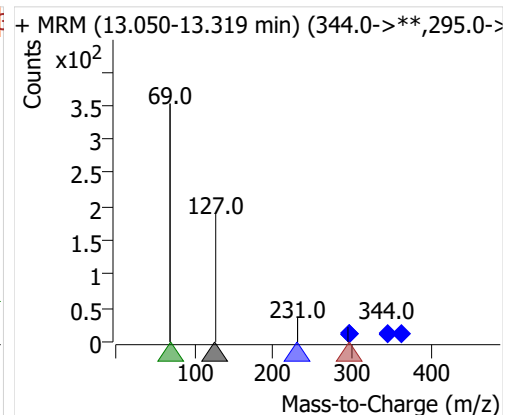
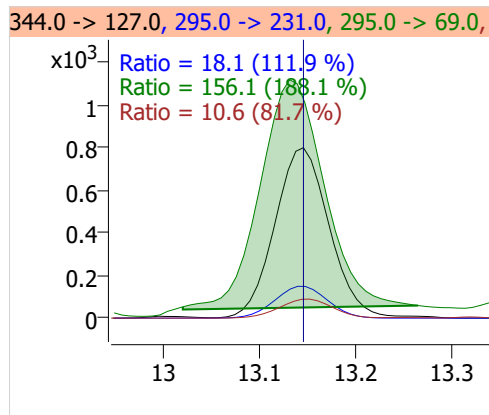
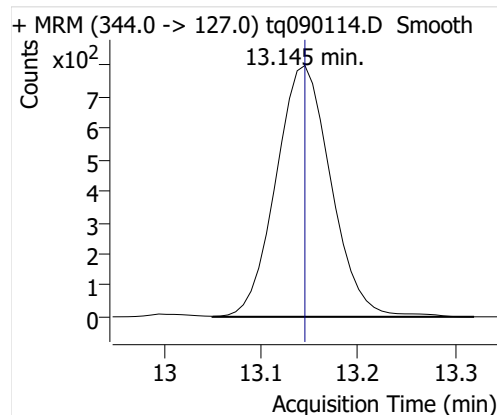
5:2sFTOH



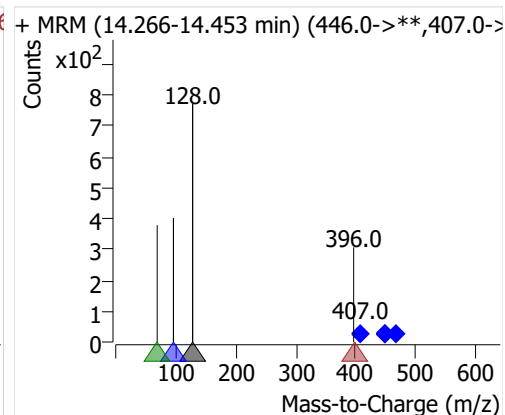
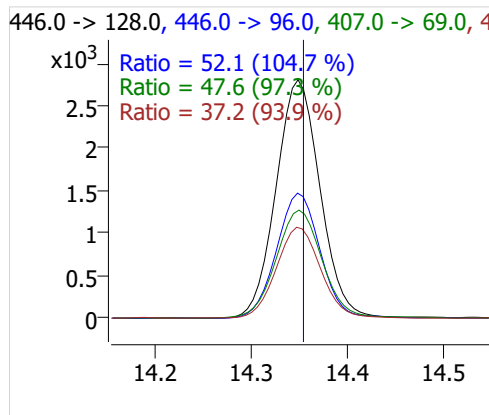
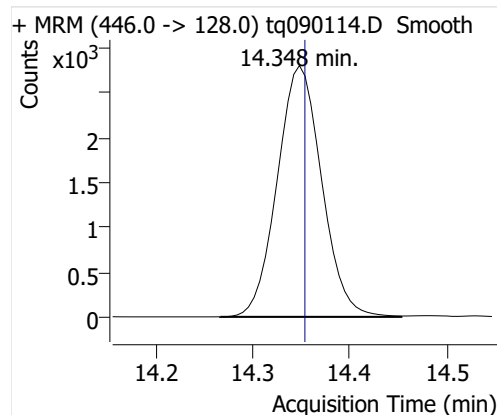
7:2sFTOH



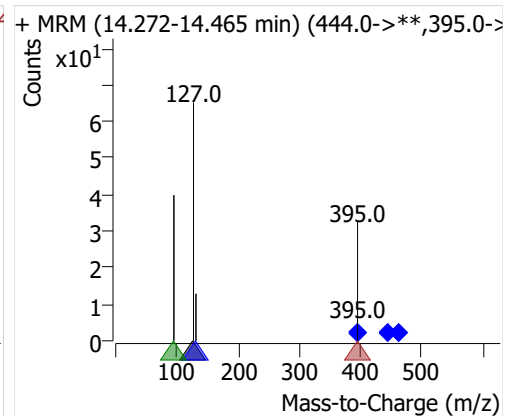
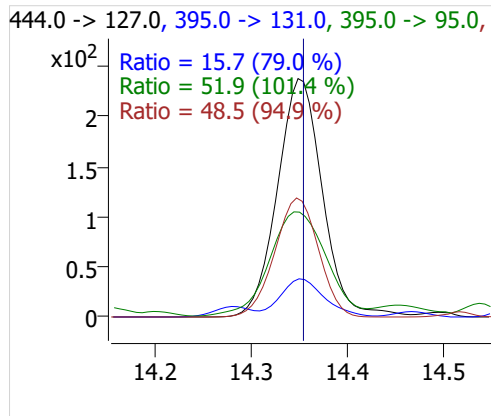
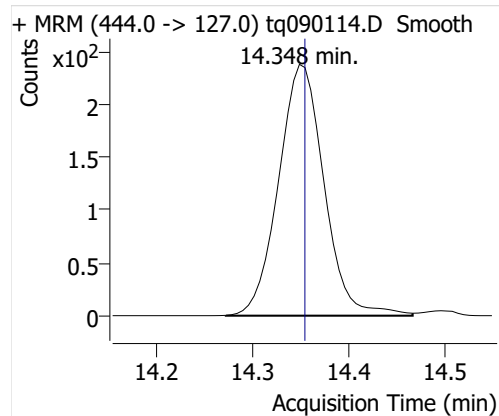
6:2 FTOH



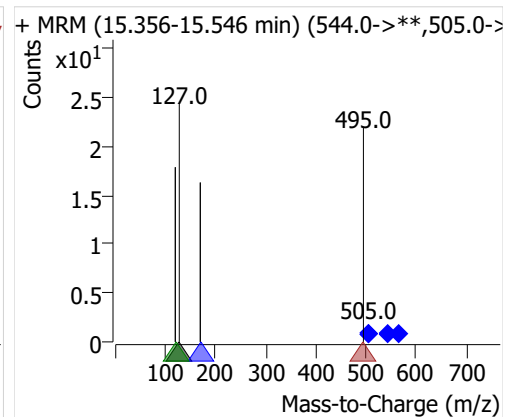
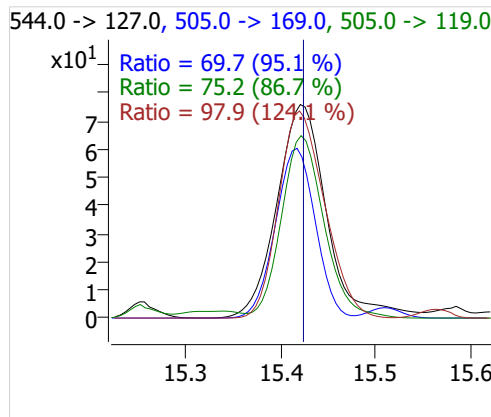
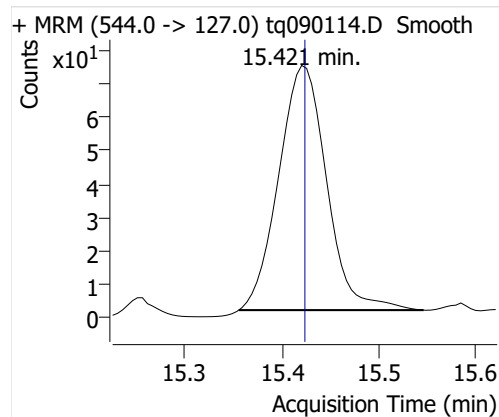
8:2 FTOH-C13



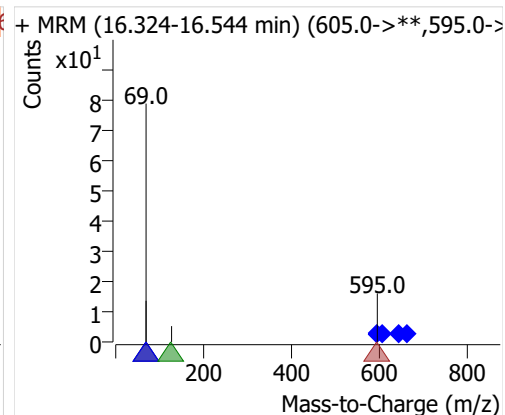
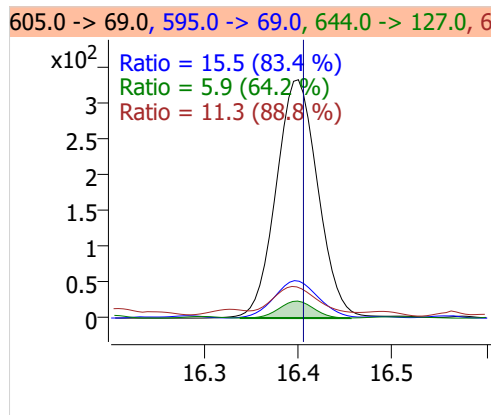
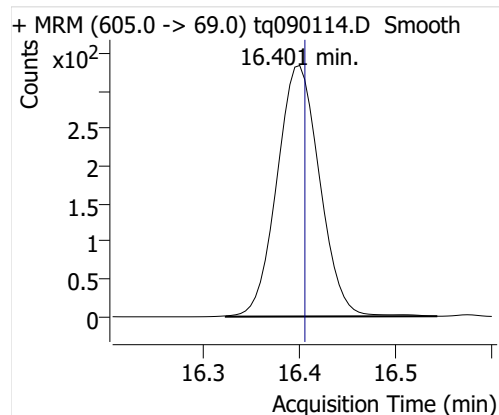
8:2 FTOH



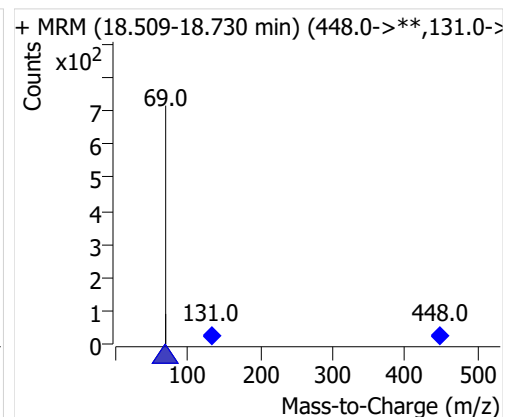
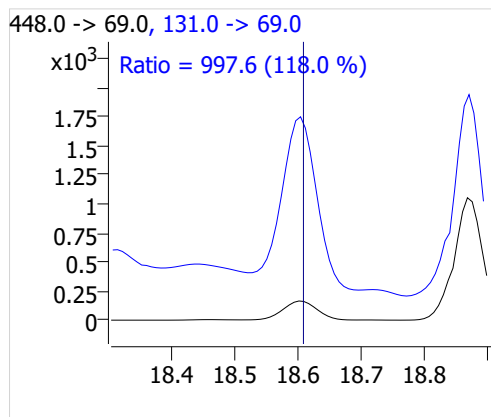
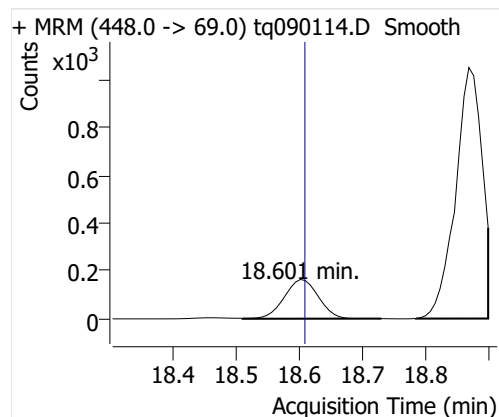
10:2 FTOH



12:2 FTOH



NMeFOSA



NETFOSA

